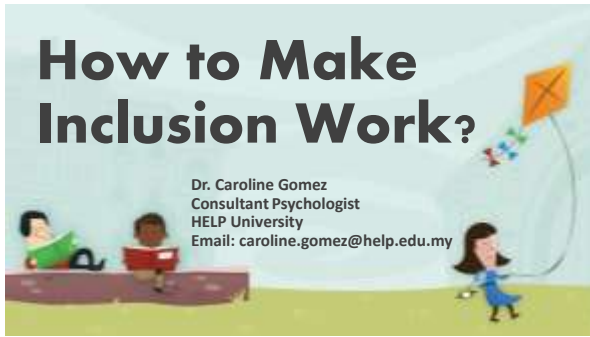


# How to Make Inclusion Work?

Dr. Caroline Gomez



---

---

---

---

---

---

---



---

---

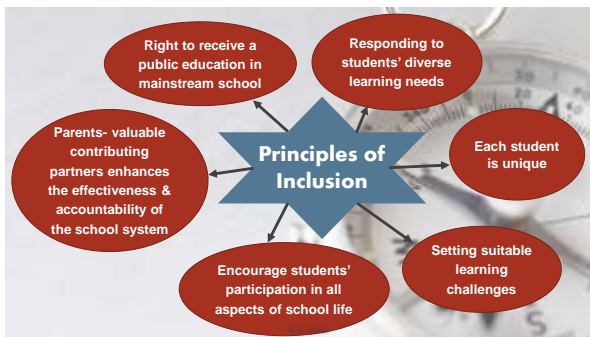
---

---

---

---

---



---

---

---

---

---

---

---

# How to Make Inclusion Work?

Dr. Caroline Gomez

## Inclusion is not children with SEN...

...spending the majority of their school day in a Special Ed room and being included in regular classes for art, PE and music. This is Visitation!

...attending regular education classes, but being repeatedly pulled out for special services through the day. This is part time mainstreaming!

...being in regular classes, but sitting in the back of the room with a full time aide. This is physical integration!

...being visited by typical children (role models) in special education classes. This is reverse mainstreaming!

---

---

---

---

---

---

---

---

## INCLUSIVE CLASSROOM

### TYPICAL STUDENTS

ASD

ADHD

Physical/Medical

SEN

Dyslexia

G & T

---

---

---

---

---

---

---

---

## A System Approach

Successful promotion and implementation of inclusive education require the five following systems-level practices:

- Legislation & Visionary leadership
- Budget
- Redefining Roles & Relationships among adults & students
- Collaboration
- Sharing good practice



---

---

---

---

---

---

---

---

# How to Make Inclusion Work?

Dr. Caroline Gomez

## 1. Legislation & Visionary leadership

Person With Disabilities (PWD) Act (2008)

### Article 28

- Persons with disabilities **shall not be excluded** from the general education system on the basis of disabilities.
- The Government and private educational providers shall **provide reasonable accommodation** in order to enable persons and children with disabilities to pursue education. They shall take **appropriate steps and measures** to enable persons and children with disabilities to learn life and social development skills



Visionary leadership & administrative support is vital to enforce and implement these laws in all mainstream schools and institutions of higher learning.

---

---

---

---

---

---

---

---

## 2. Budget: Invest in substantial resources



---

---

---

---

---

---

---

---

## 3. Redefining Roles & Relationships among Adults & Students



---

---

---

---

---

---

---

---

# How to Make Inclusion Work?

Dr. Caroline Gomez

### 4. Collaboration

**Quality Inclusive Education**

- Principals
- Special education directors
- Teachers
- Community members
- Health & Care Professionals
- Parents

- Creating teams to plan & organize inclusive practices
- Teachers must be given sufficient time to plan & prepare for inclusive practices
  - Writing IEPs
  - Getting resources ready
  - Conducting review meetings with parents & professionals

---

---

---

---

---

---

---

---

### 5. Sharing Good Practice

- Achievement of inclusive education presumes that **no one person could have all the expertise** required to meet the needs of all the students in a classroom
- Educators must become effective and efficient collaborative team members & share good practice
- There must be transparency in information sharing



---

---

---

---

---

---

---

---

### Change in Mindset

**Vygotsky:**  
Learning and development are mediated by human activities and interactions that are situated within the cultural and social context

VALUING DIVERSITY & DIFFERENCE

---

---

---

---

---

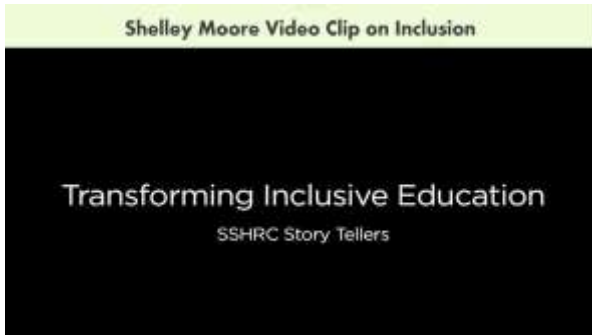
---

---

---

# How to Make Inclusion Work?

Dr. Caroline Gomez



---

---

---

---

---

---

---

---



---

---

---

---

---

---

---

---



---

---

---

---

---

---

---

---

# How to Make Inclusion Work?

Dr. Caroline Gomez

## Rotary-HELP: Autism Early Intervention Training



---

---

---

---

---

---

---

---

## SEN & Inclusion Awareness Raising (WHI, TV3)



---

---

---

---

---

---

---

---

## Pintar-HELP National Teacher Training on Inclusion (Phase 1)



---

---

---

---

---

---

---

---

# How to Make Inclusion Work?

Dr. Caroline Gomez

Pintar-HELP National Teacher Training on Inclusion (Phase 2)



---

---

---

---

---

---

---

---

Pintar-HELP National Teacher Training on Inclusion



---

---

---

---

---

---

---

---

So how does Inclusion work ?



---

---

---

---

---

---

---

---

# How to Make Inclusion Work?

Dr. Caroline Gomez



**“Diversity is  
the mix.  
Inclusion is  
making the mix  
work,” Andrés  
Tapia**

---

---

---

---

---

---

---